

CREALDÉ SCHOOL OF ART

Basic Portraiture *Instructor: Rick Lang*

Prerequisites: Photo II or similar experiences.

Description:

Basic lighting and posing techniques and the use of flash and natural light in portrait photography are covered. Focus is on defining the photographic portrait to reveal a subject's unique personality. Students can work in black and white or color.

Goals:

- Become visually aware of how photography can thoughtfully represent the subject of a portrait.
- Discover the technical and aesthetical qualities of Portrait Photography
- Demonstrate personal artistic expression while producing a series of assigned prints.

Method:

- Lecture and demonstration.
- Open critique of student work.
- Practical application through photography assignments.

Course outline/materials and techniques:

1. Introduction to the basic concepts of portraiture
2. Lecture: Lighting
Print Sharing: Look at students work
Assignment: Portrait using natural light and reflectors
3. Lecture: Use of on camera Flash
Critique: Portrait using natural light and reflectors
Assignment: Portrait using on camera flash
4. Lecture: Posing
Critique: Portrait on using on camera flash
5. Field Trip (time and location will be determined in class)

6. Lecture: Introduction to Studio Flash
Critique: Field Trip
7. Studio Session
8. Critique: Studio Session
Lecture: The business of portrait photography

Individual needs:

Crealdé encourages recommendations concerning the physical environment of its facilities. Wheelchair accessible.

Course completion:

Final critique of past assignments. Suggestions and discussion of individual direction.

Resources:

The student should supplement the provided education experience through attendance at lectures and exhibitions at Crealdé and other institutions. The instructor will make suggestions for further information through books and magazines.

Lighting Patterns



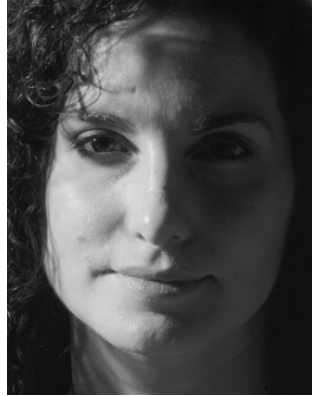
Butterfly



Loop



45 Degree



Split Lighting



Narrow Lighting



Broad Lighting